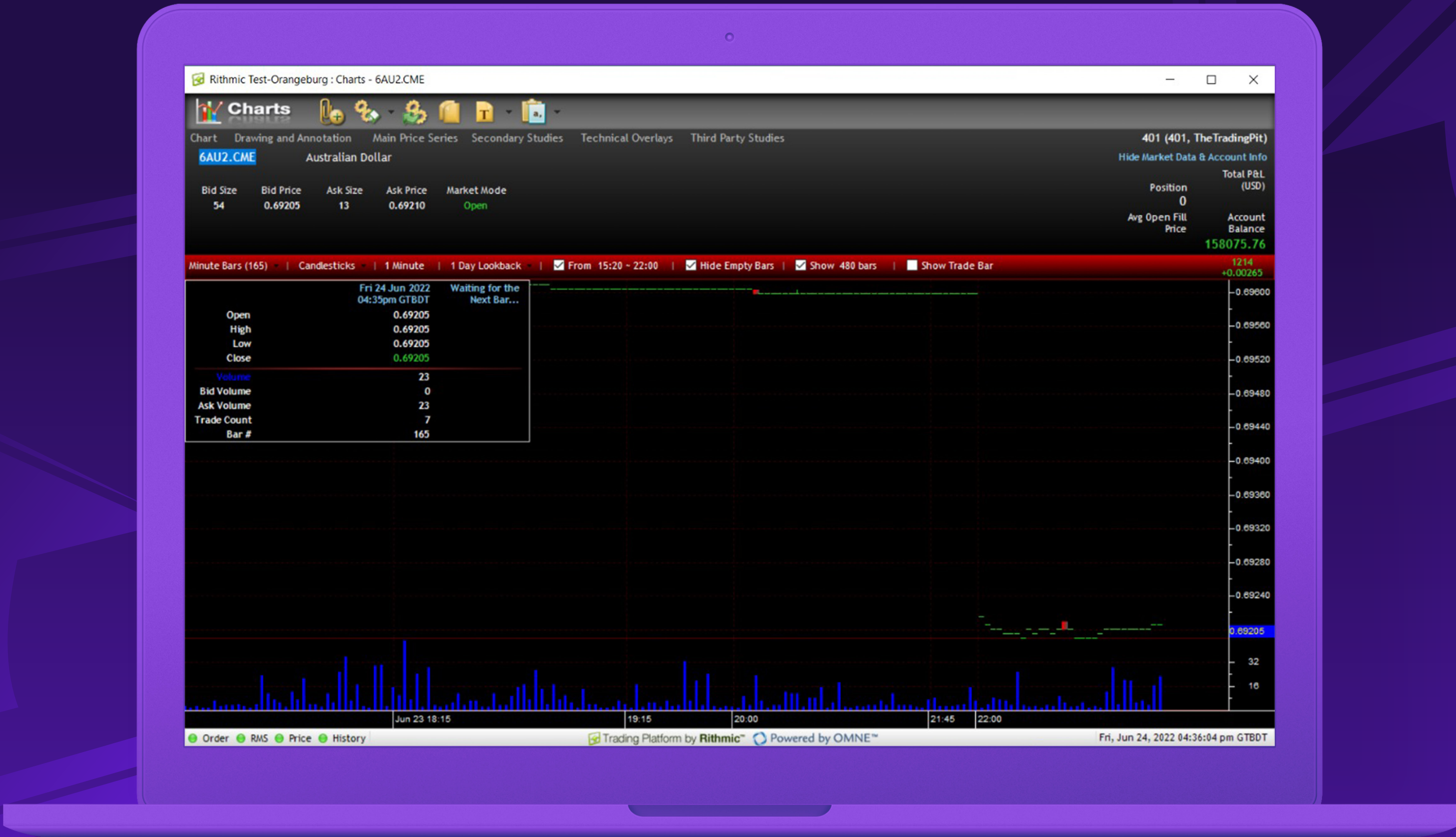


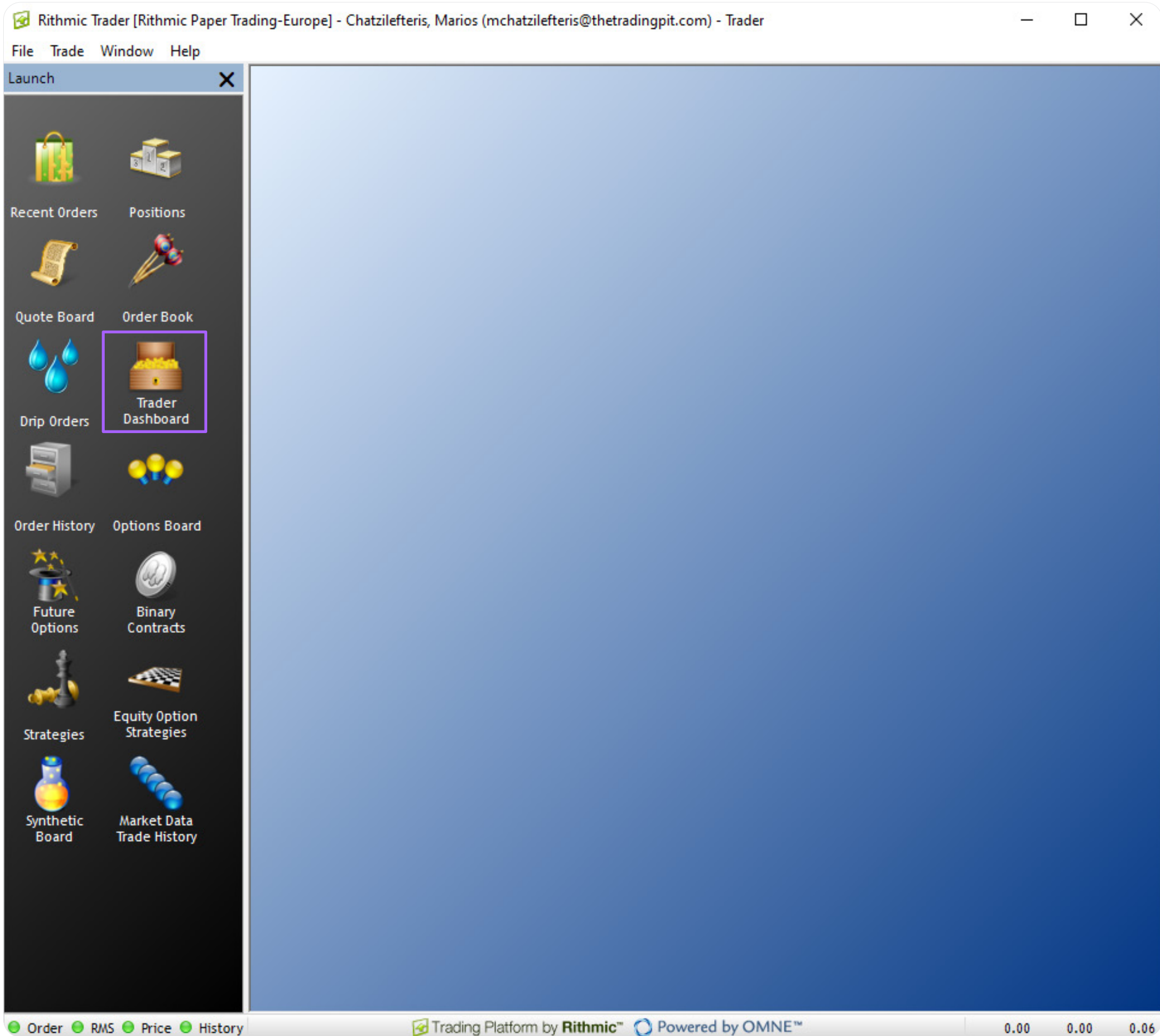
RITHMIC

RISK PARAMETERS GUIDE



Set your Risk parameters

- 1
- In order to set Rithmic to close any positions before you breach your account, head over to R/Trader of R/Trader Pro, login using your credentials and right click on the **Trader Dashboard**.



- 2
- Choose the **account** you want to set the parameters to, right click on it and choose “**View Risk Parameters**” as per below.

Rithmic Paper Trading-Europe : Trader Dashboard - TheTradingPit

Trader Dashboard

IB TheTradingPit (TheTradingPit) Accounts ALL 0 0 29 0 Alert Me By More Options Legend

Account	Account Name	Alert State	Long Exposure	Short Exposure	Open Profit/Loss	Closed Profit/Loss	P&L	Account Balance	Cash On Hand	%Max Allowable Loss	Working Buy Qty	Fill Buy Qty	Working Sell Qty	Fill Sell Qty	Net Position	Risk Algorithm
500084	500084		0	0	0.00	0.00	0.00	150000.00	150000.00		0	0	0	0	0	Maximum Available /
500050	500050		0	0	0.00	0.00	0.00	147283.49	147283.49		0	0	0	0	0	Maximum Available /
500049	500049		0	0	0.00	0.00	0.00	148138.27	148138.27		0	0	0	0	0	Max Loss
500048	500048		0	0	0.00	0.00	0.00	150000.00	150000.00		0	0	0	0	0	Maximum Available /
500047	500047		0	0	0.00	0.00	0.00	150016.26	150016.26		0	0	0	0	0	Max Loss
500045	500045		0	0	0.00	0.00	0.00	152071.01	152071.01		0	0	0	0	0	Max Loss
500044	500044		0	0	0.00	0.00	0.00	150000.00	150000.00		0	0	0	0	0	Maximum Available /
500043	500043		0	0	0.00	0.00	0.00	150000.00	150000.00		0	0	0	0	0	Maximum Available /
500042	500042		0	0	0.00	0.00	0.00	150000.00	150000.00		0	0	0	0	0	Maximum Available /
500041	500041		0	0	0.00	0.00	0.00	149601.10	149601.10		0	0	0	0	0	Maximum Available /
500039	500039		0	0	0.00	0.00	0.00	150000.00	150000.00		0	0	0	0	0	Maximum Available /
500038	500038		0	0	0.00	0.00	0.00	150000.00	150000.00		0	0	0	0	0	Maximum Available /
500037	500037		0	0	0.00	0.00	0.00	150000.00	150000.00		0	0	0	0	0	Maximum Available /
500036	500036		0	0	0.00	0.00	0.00	150000.00	150000.00		0	0	0	0	0	Maximum Available /
500035	500035		0	0	0.00	0.00	0.00	149644.76	149644.76		0	0	0	0	0	Maximum Available /
500028	500028		0	0	0.00	0.00	0.00	153107.32	153107.32		0	0	0	0	0	Maximum Available /
500026	500026		0	0	0.00	0.00	0.00	147438.70	147438.70		0	0	0	0	0	Maximum Available /
500018	500018		0	0	0.00	0.00	0.00	148118.30	148118.30		0	0	0	0	0	Maximum Available /
500016	500016		0	0	0.00	0.00	0.00	150000.00	150000.00		0	0	0	0	0	Maximum Available /
500014	500014		0	0	0.00	0.00	0.00	150097.02	150097.02		0	0	0	0	0	Maximum Available /
500013	500013		0	0	0.00	0.00	0.00	150543.80	150543.80		0	0	0	0	0	Maximum Available /
500012	500012		0	0	0.00	0.00	0.00	150134.29	150134.29		0	0	0	0	0	Maximum Available /
500011	500011		0	0	0.00	0.00	0.00	146471.87	146471.87		0	0	0	0	0	Maximum Available /
500010	500010		0	0	0.00	0.00	0.00	150028.71	150028.71		0	0	0	0	0	Maximum Available /
500009	500009		0	0	0.00	0.00	0.00	150000.00	150000.00		0	0	0	0	0	Maximum Available /
500008	500008		0	0	0.00	0.00	0.00	150000.00	150000.00		0	0	0	0	0	Maximum Available /
500007	500007		0	0	0.00	0.00	0.00	150000.00	150000.00		0	0	0	0	0	Maximum Available /
500006	500006		0	0	0.00	0.00	0.00	145141.96	145141.96		0	0	0	0	0	Maximum Available /
500005	500005		0	0	0.00	0.00	0.00	146399.97	146399.97		0	0	0	0	0	Maximum Available /

View Risk Parameters Ctrl+E

View Account SMAC Products

View IB SMAC Products

View FCM SMAC Products

View Account No Trade Symbols

View IB No Trade Symbols

View FCM No Trade Symbols

Recent Orders Ctrl+O

View Positions Ctrl+P

Order History

Show separators in numbers

Round to whole numbers

Show account summary

Enable Liquidating Only

Order Book Ctrl+B

Options Board

Future Options

Future Strategies

Equity Option Strategies

Place Order

Pull Working Orders

Pull Working Orders and Exit Positions

Order RMS Price History Trading Platform by Rithmic™ Powered by OMNE™ Tue, Oct 11, 2022 11:56:46 am GTBDT

- 3 Then **enable Auto Liquidate** and choose the **Auto Liquidate Criteria** you want and set the amount limit through **Auto Liquidate Threshold**.

Rithmic Paper Trading-Europe : View Risk Parameters - 500084 (Maximum Available Margin)

Risk Parameters

Risk Parameters set by the FCM Administrator Risk Parameters set by the IB Administrator Risk Parameters set by the Trader

Account	No Trading From (HH:mm:ss)	No Trading To (HH:mm:ss)	Auto Liquidate	Auto Liquidate Criteria	Auto Liquidate Threshold	Auto Liquidate Max Min Account Balance	Ignore Open P&L When Trailing	Auto Liquidate At (HH:mm:ss)	Liquidate Only On Auto Liquidate
500084									

Product	No Trading From (HH:mm:ss)	No Trading To (HH:mm:ss)	Auto Liquidate At (HH:mm:ss)
6A			
6B			
6C			
6E			
6J			
6N			
6S			
CL			
EMD			
ES			
FDAX			
FDXM			
FDXS			
FESX			
FGBL			
FGBM			
FGBS			
FSXE			
GC			
GF			
HE			

Order RMS Price History Trading Platform by Rithmic™ Powered by OMNE™ Tue, Oct 11, 2022 11:57:05 am GTB0T

You can use this tool to set an automatic liquidation to your position before you hit your daily breach limit. Make sure you set the numbers with some difference from the drawdown limit, as the slightest latency caused through technology could delay closing your position and therefore allow you to breach the daily drawdown rule.

MAIN OFFICES



Liechtenstein

The companies are registered in Vaduz, Liechtenstein.

The Trading Pit AG

Landstrasse 63
9490 Vaduz
Liechtenstein
Reg. Number: FL-0002.688.743-6

The Trading Pit Challenge GmbH

Landstrasse 63
9490 Vaduz
Liechtenstein
Reg. Number: FL-0002.693.417-1

The Trading Pit Champions GmbH

Landstrasse 63
9490 Vaduz
Liechtenstein
Reg. Number: FL-0002.693.413-9



Cyprus

The company is registered in Cyprus.

The Trading Pit Ltd

Registered Address:

Kalampakas 18, 6037, Larnaca,
Cyprus
Reg.Number: HE 431291

Operational Address:

Ayiou Athanasiou 74, 4102, Mesa
Geitonia, Limassol, Cyprus

Representative Offices



Spain

Our representative office in Spain.

Calle de Agatha
Christie 79
El Encinar de Los Reyes
28055 Madrid, Spain



Canada

Our representative office in Canada.

1188 Union Inc.
5th floor
Montreal, Canada
H3B 0E5

