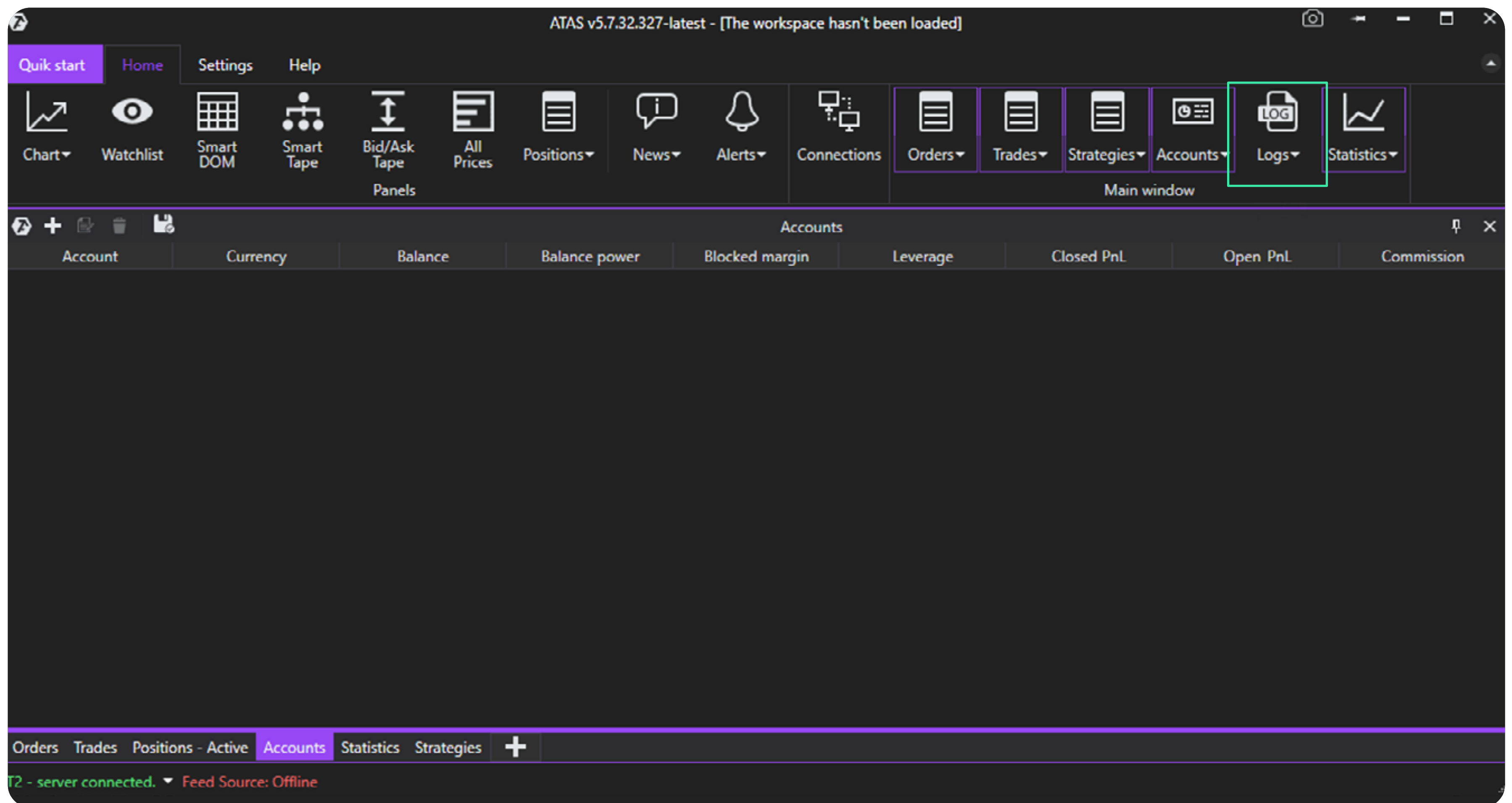




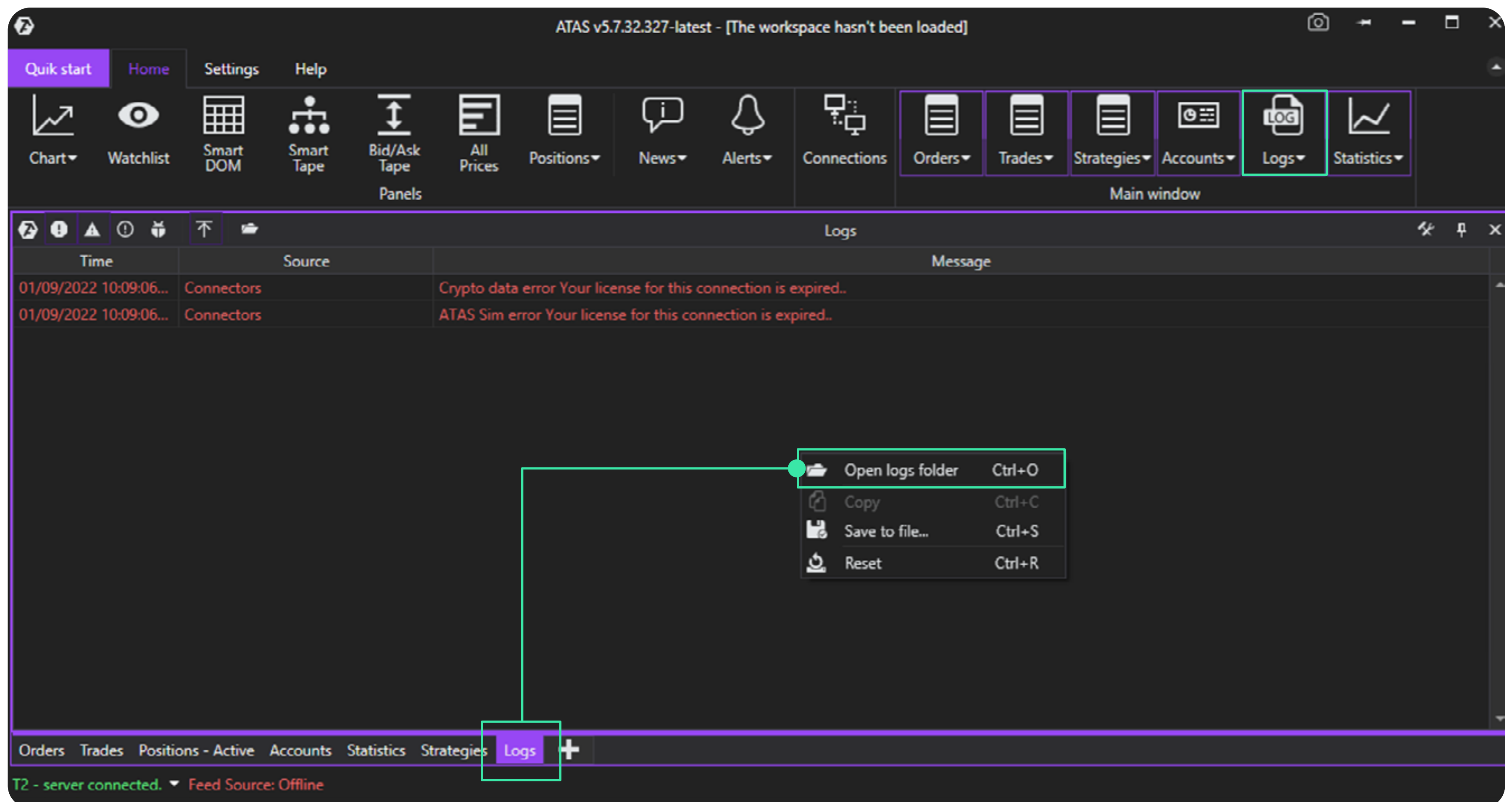
## How to find the Logs from **ATAS**



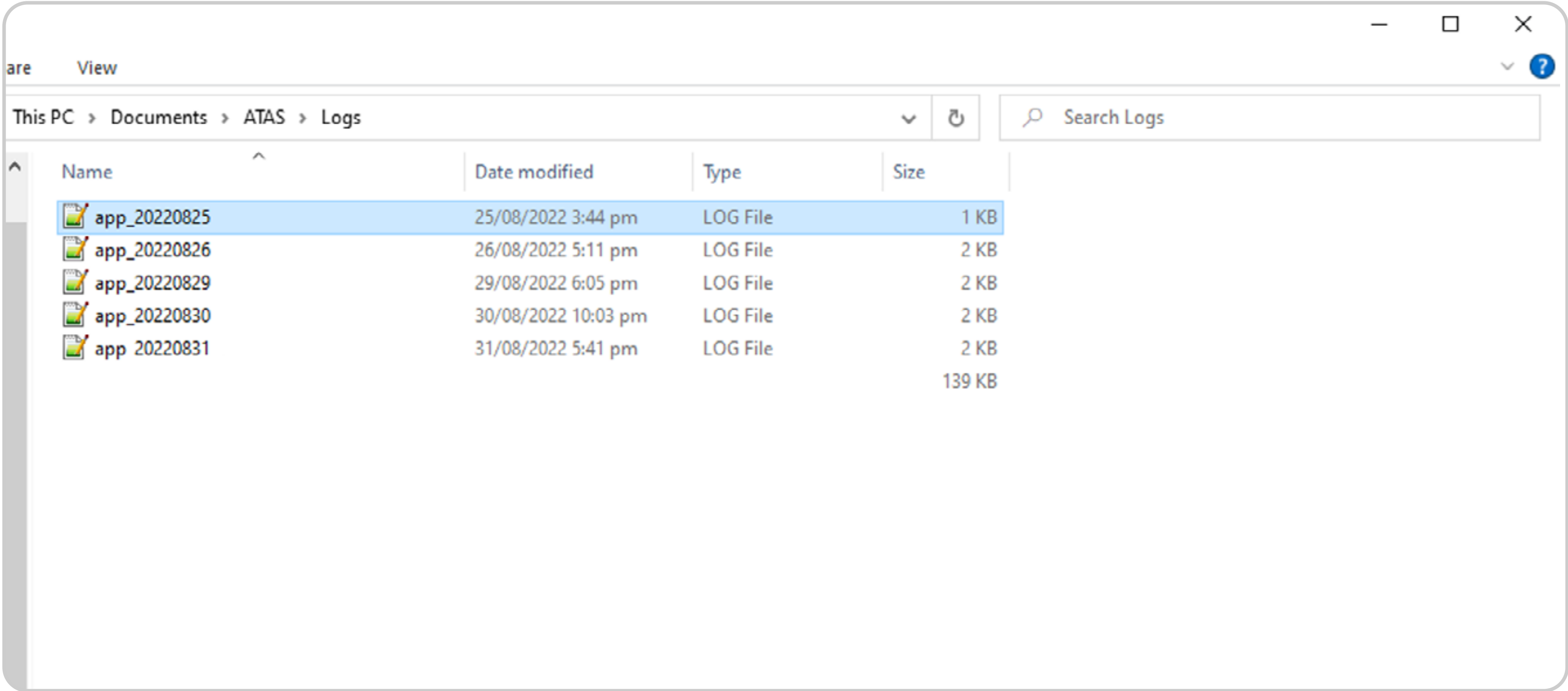
- 1 Open your ATAS platform and click on **Logs**.



- 2 Select the **Logs** window in the **footer**. Then **right click anywhere** in the Log window and **select** 'Open logs folder'.



3 Then **choose** the **Log file** with the **date** you want.

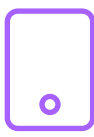


If you are having issues connecting, please check if your credentials and server are correct and if your internet connection is stable. If you are still having issues, feel free to get in touch with our [Support team](#).



Email

support@thetradingpit.com

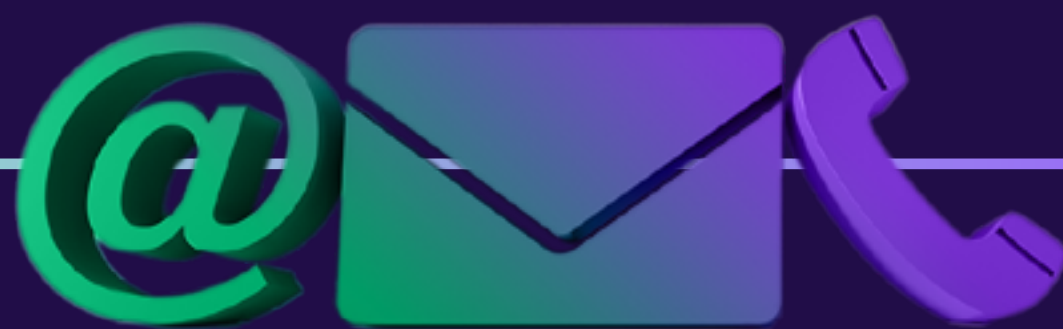


Phone Number  
+ 4232379000



Live Chat Support  
Pitbot





[thetradingpit.com/contact-us](https://thetradingpit.com/contact-us)

